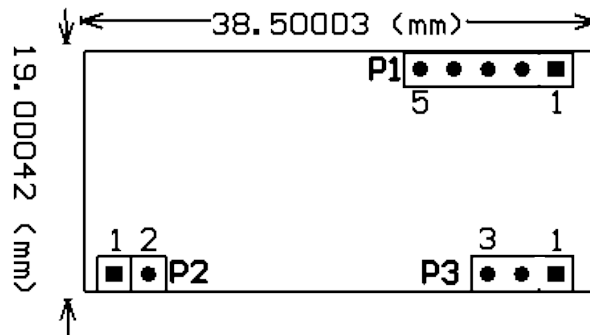


RDM630 Specification



Pin definition

TTL interface RS232 data format

P1

PIN1	TX
PIN2	RX
PIN3	
PIN4	GND
PIN5	+5V(DC)

P2:

PIN1	ANT1
PIN2	ANT2

P3:

PIN1	LED
PIN2	+5V(DC)
PIN3	GND

Specification and Parameter

Frequency	125KHz
Baud Rate	9600 (TTL Electricity Level RS232 format)
interface	UART
Power supply	DC 5V ($\pm 5\%$)
Current	< 50Ma
Operating range	> 50mm (Depend on Card/Tag shape, manufacturer)
Expand I/O port	N/A
Indication light	N/A
Working temperature	-10°C ~ +70°C
Storage temperature	-20°C ~ +80°C
Max. humidity	Relative humidity 0 ~ 95%
Size	38.5mm × 19mm × 9mm

TTL Interface RS232 Data output format

1. 9600bps,N,8,1
2. CHECKSUM: card 10byte DATA entire do XOR operation

02	10ASCII Data Characters	Checksum	03
----	--------------------------------	----------	----

Example: card number: 62E3086CED

Output data:36H、32H、45H、33H、30H、38H、36H、43H、45H、44H

CHECKSUM: (62H) XOR (E3H) XOR (08H) XOR (6CH) XOR (EDH)=08H

2. Time sequence chart

